

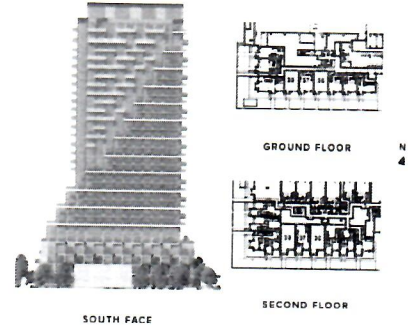
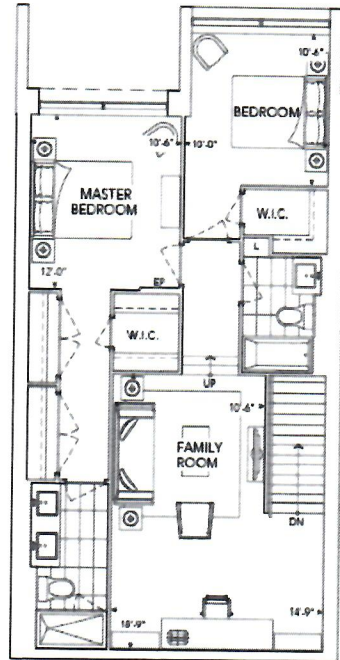
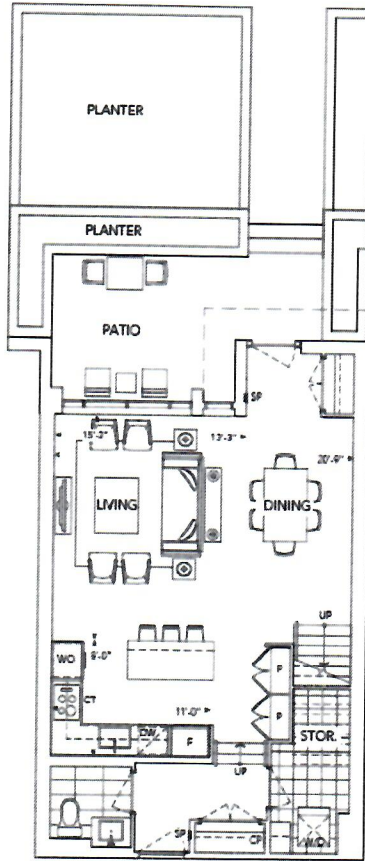
AUBERGE  
ON THE PARK



TH4-2 (Townhouses)

\$1,465,000 \*

1623 SQFT \*



\* Prices, specifications, sizes, floorplan, keyplate & occupancy are subject to change without notice. Maintenance & taxes are estimations only and are finalized on condominium registration. All dimensions are approximate and subject to normal construction variances. Dimensions may exceed the useable floor area. Actual usable floor space may vary from the stated floor area. Furniture is displayed for illustration purposes only and does not necessarily reflect the electrical plan for the suite. Suites are sold unfurnished. Balcony and Façade Variations may apply, contact a sales representative for further details. Furniture, BBQs and planter locations on terraces are for illustration purposes only and subject to change. E.&O.E. August 2019

Sales Teams

We use cookies on this site to improve your experience as explained in our Cookie Policy. By continuing to use this website, you agree to our [Privacy Policy](#).