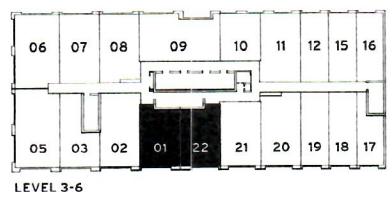
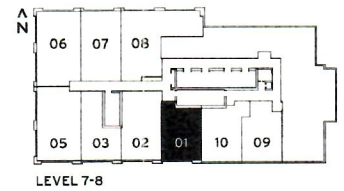
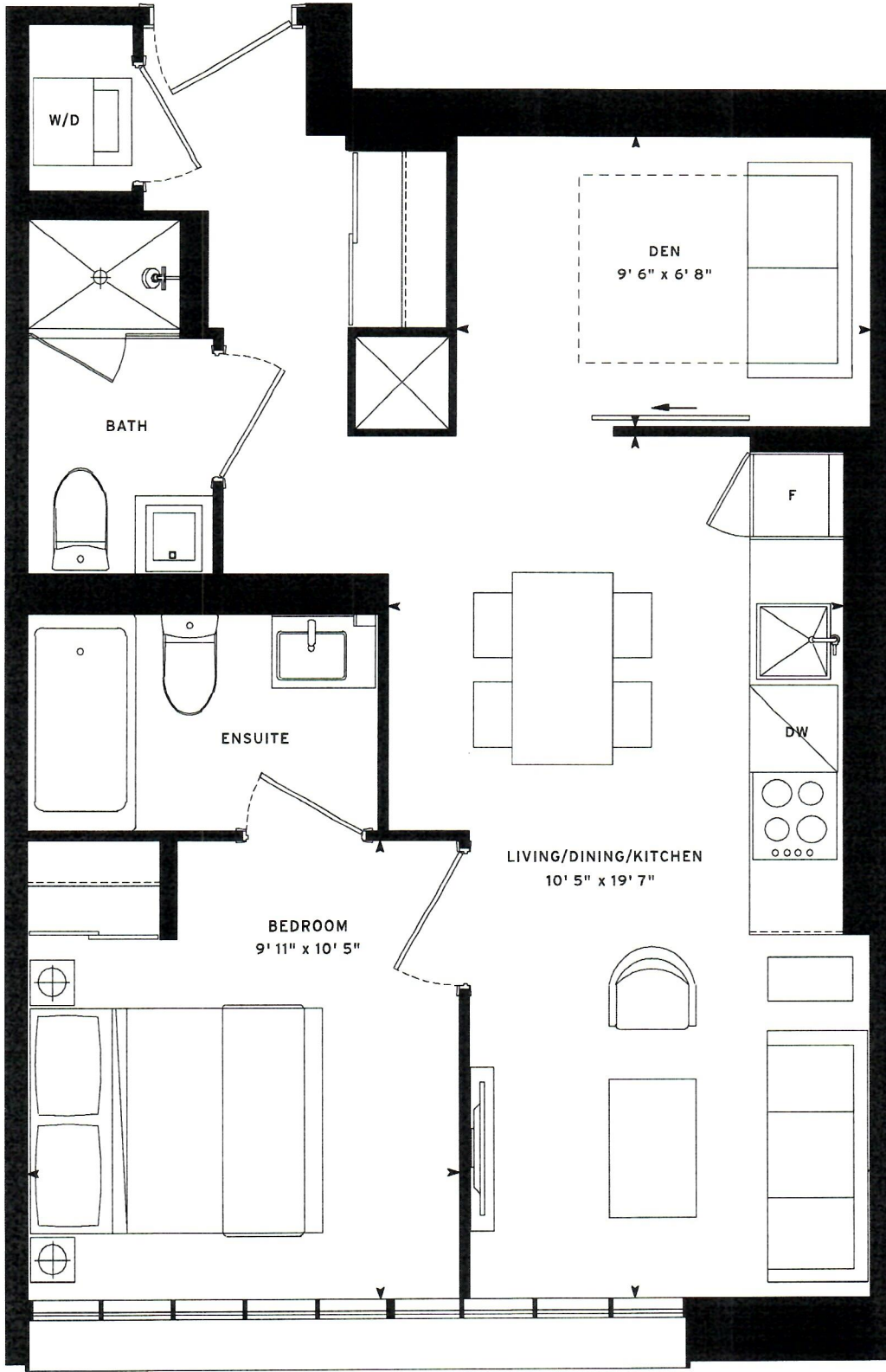


# MERCER P01/P22

## 1 BED PLUS DEN: 598 SF

**N<sup>o</sup>**  
**555**  
**MERCER**



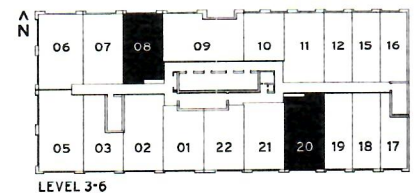
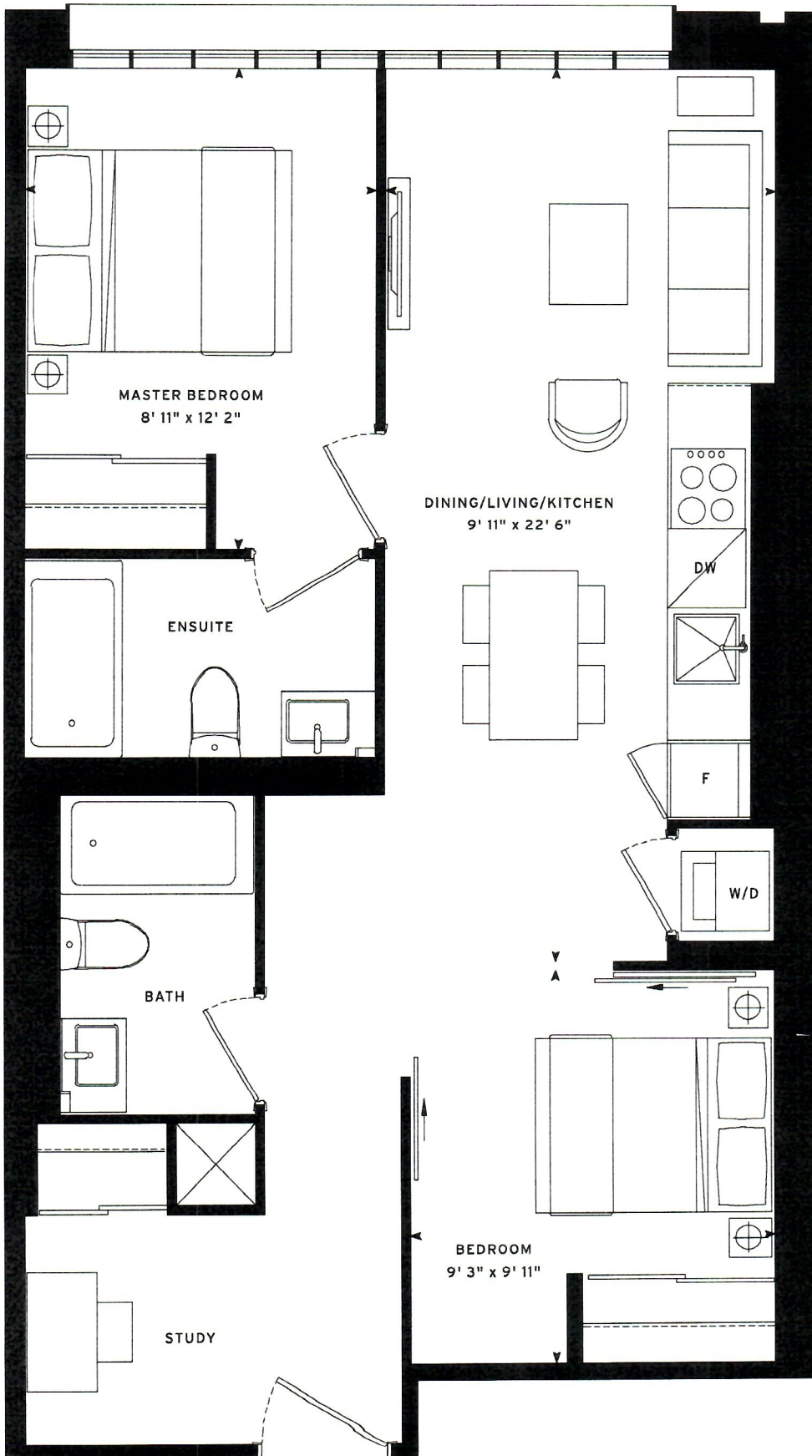
Note: All prices, figures, sizes, specifications and information are subject to change without notice. E. & O.E. All areas and stated dimensions are approximate. Actual usable floor space, living area and square footage may vary from stated floor area. All illustrations are artist's concept only. The unit shown may be the reverse of the unit purchased. Exterior building elements may be visible from within unit, including but not limited to frit patterning, mullion/metal panel placements, or other visual treatments. The purchase price does not include any furniture. © 2020 CentreCourt Developments. All rights reserved.



# MERCER P08/P20

## 2 BED PLUS STUDY: 712 SF

**552<sup>o</sup>**  
MERCER



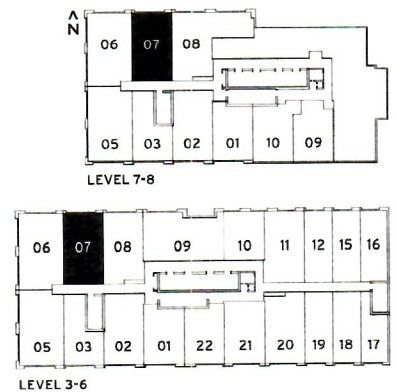
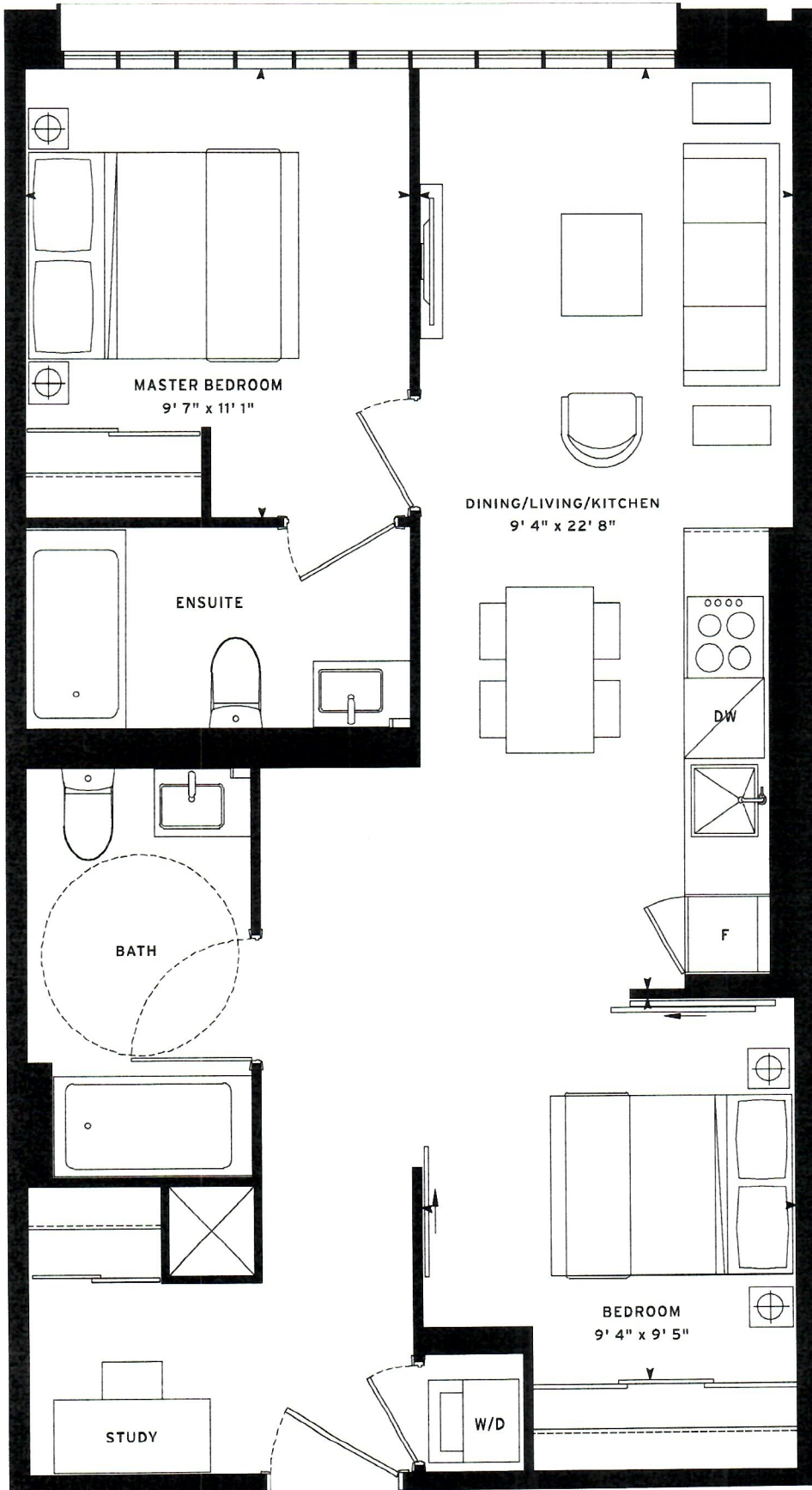
Note: All prices, figures, sizes, specifications and information are subject to change without notice. E. & O.E. All areas and stated dimensions are approximate. Actual usable floor space, living area and square footage may vary from stated floor area. All illustrations are artist's concept only. The unit shown may be the reverse of the unit purchased. Exterior building elements may be visible from within unit, including but not limited to frit patterning, mullion/metal panel placements, or other visual treatments. The purchase price does not include any furniture. © 2020 CentreCourt Developments. All rights reserved.

# MERCER P07

## 2 BED PLUS STUDY: 727 SF

# 552<sup>o</sup>

MERCER

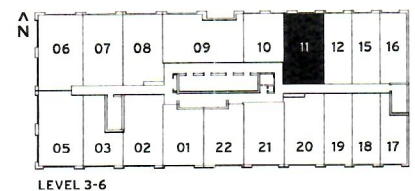
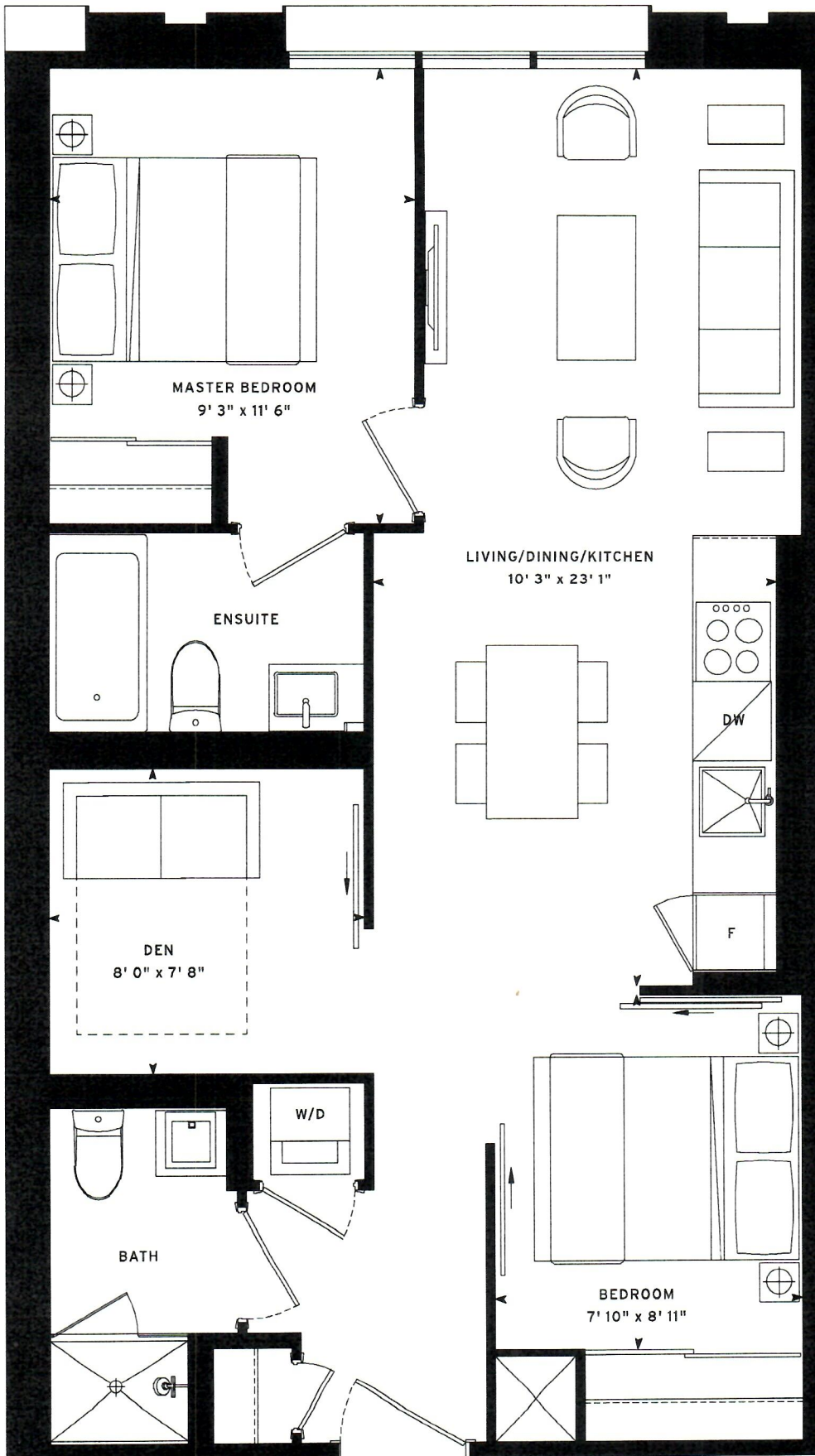


Note: All prices, figures, sizes, specifications and information are subject to change without notice. E. & O.E. All areas and stated dimensions are approximate. Actual usable floor space, living area and square footage may vary from stated floor area. All illustrations are artist's concept only. The unit shown may be the reverse of the unit purchased. Exterior building elements may be visible from within unit, including but not limited to frit patterning, mullion/metal panel placements, or other visual treatments. The purchase price does not include any furniture. © 2020 CentreCourt Developments. All rights reserved.

# MERCER P11

## 2 BED PLUS DEN: 738 SF

**552°**  
MERCER



Note: All prices, figures, sizes, specifications and information are subject to change without notice. E. & O.E. All areas and stated dimensions are approximate. Actual usable floor space, living area and square footage may vary from stated floor area. All illustrations are artist's concept only. The unit shown may be the reverse of the unit purchased. Exterior building elements may be visible from within unit, including but not limited to frit patterning, mullion/metal panel placements, or other visual treatments. The purchase price does not include any furniture. © 2020 CentreCourt Developments. All rights reserved.