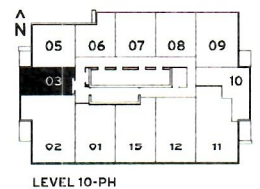
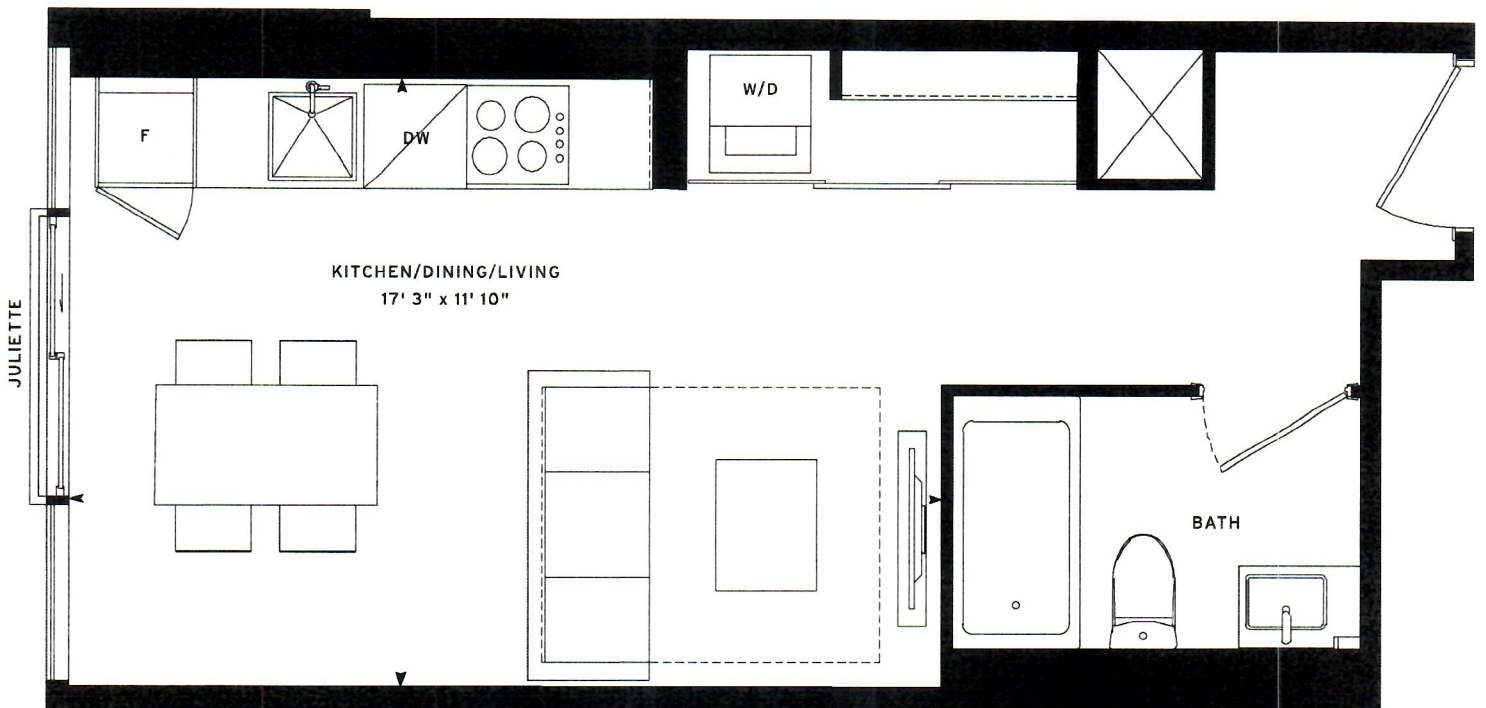


MERCER 03  
STUDIO: 370 SF

Nº  
555  
MERCER

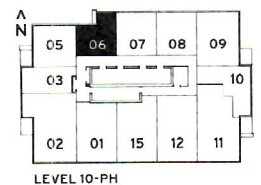
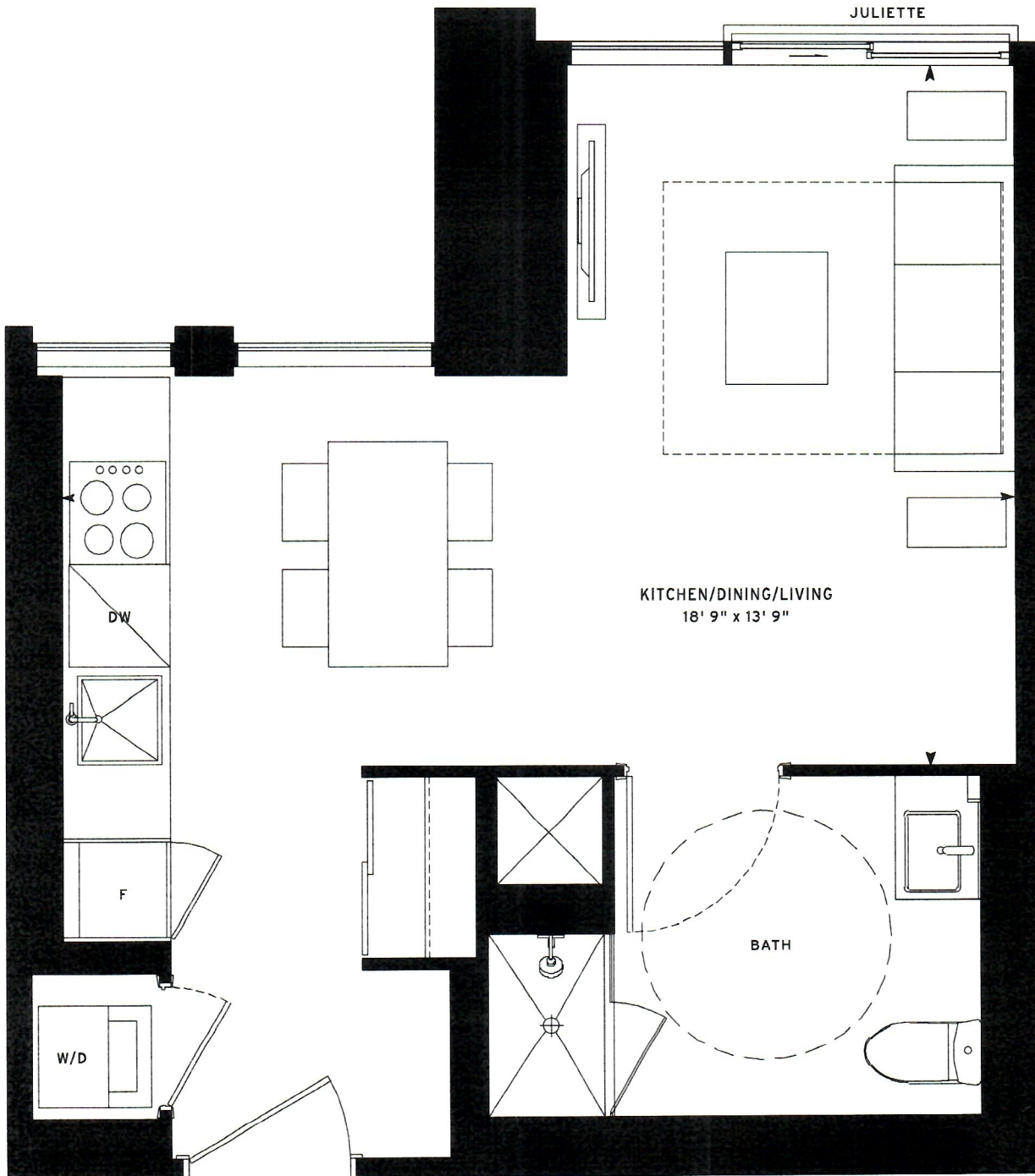


Note: All prices, figures, sizes, specifications and information are subject to change without notice. E. & O.E. All areas and stated dimensions are approximate. Actual usable floor space, living area and square footage may vary from stated floor area. All illustrations are artist's concept only. The unit shown may be the reverse of the unit purchased. Exterior building elements may be visible from within unit, including but not limited to frit patterning, mullion/metal panel placements, or other visual treatments. The purchase price does not include any furniture. © 2020 CentreCourt Developments. All rights reserved.



**MERCER 06**  
**STUDIO: 396 SF**

**552<sup>o</sup>**  
**MERCER**

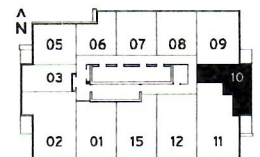
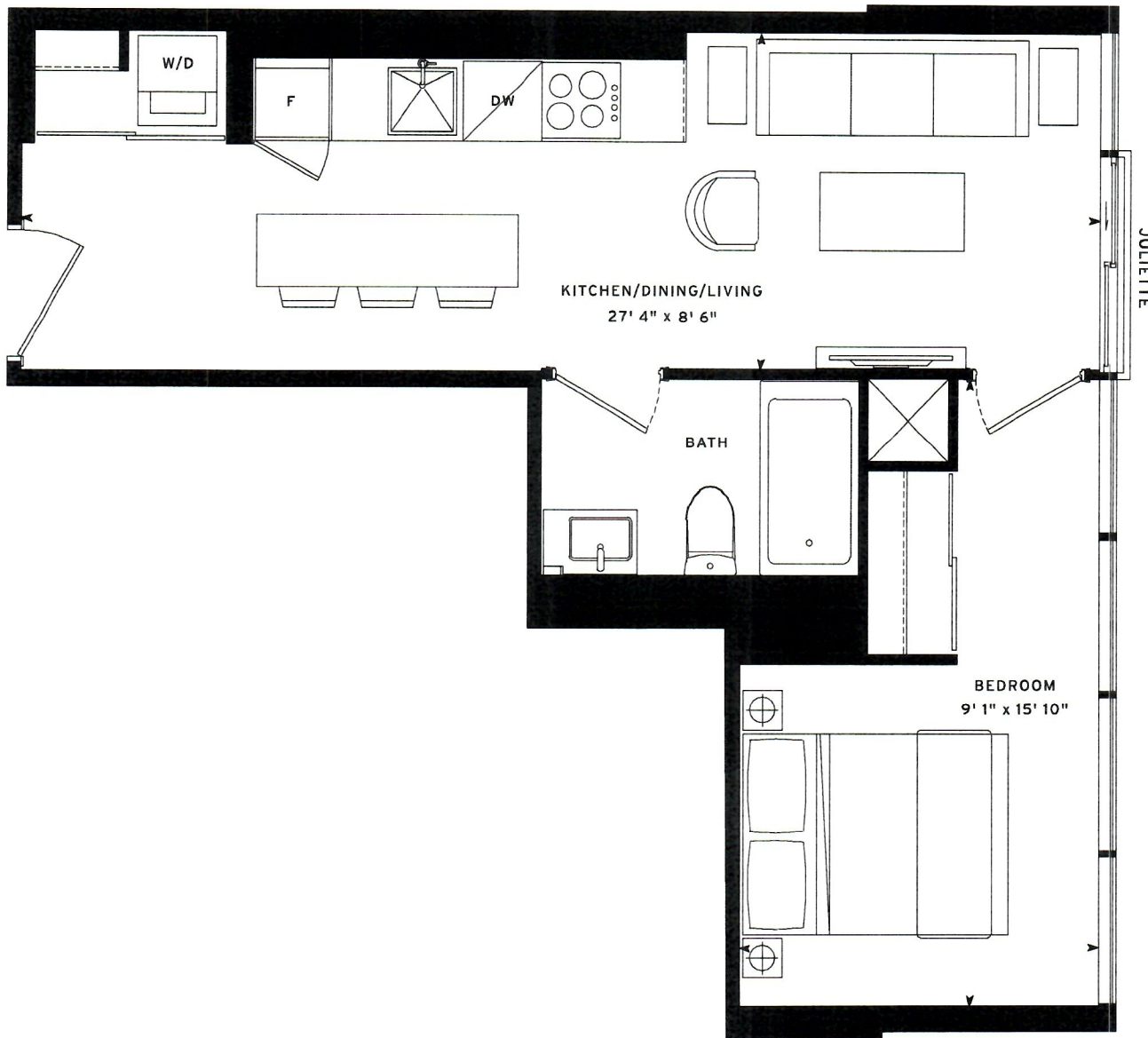


Note: All prices, figures, sizes, specifications and information are subject to change without notice. E. & O.E. All areas and stated dimensions are approximate. Actual usable floor space, living area and square footage may vary from stated floor area. All illustrations are artist's concept only. The unit shown may be the reverse of the unit purchased. Exterior building elements may be visible from within unit, including but not limited to frit patterning, mullion/metal panel placements, or other visual treatments. The purchase price does not include any furniture. © 2020 CentreCourt Developments. All rights reserved.

**MERCER 10**  
**1 BED: 463 SF**

**555 N°**

**MERCER**

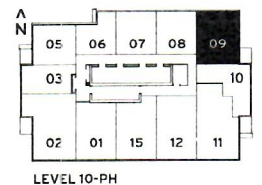


LEVEL 10-PH

Note: All prices, figures, sizes, specifications and information are subject to change without notice. E. & O.E. All areas and stated dimensions are approximate. Actual usable floor space, living area and square footage may vary from stated floor area. All illustrations are artist's concept only. The unit shown may be the reverse of the unit purchased. Exterior building elements may be visible from within unit, including but not limited to frit patterning, mullion/metal panel placements, or other visual treatments. The purchase price does not include any furniture. © 2020 CentreCourt Developments. All rights reserved.

**MERCER 09**  
**1 BED PLUS DEN: 610 SF**

**Nº**  
**555**  
**MERCER**



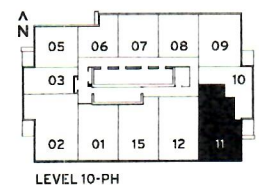
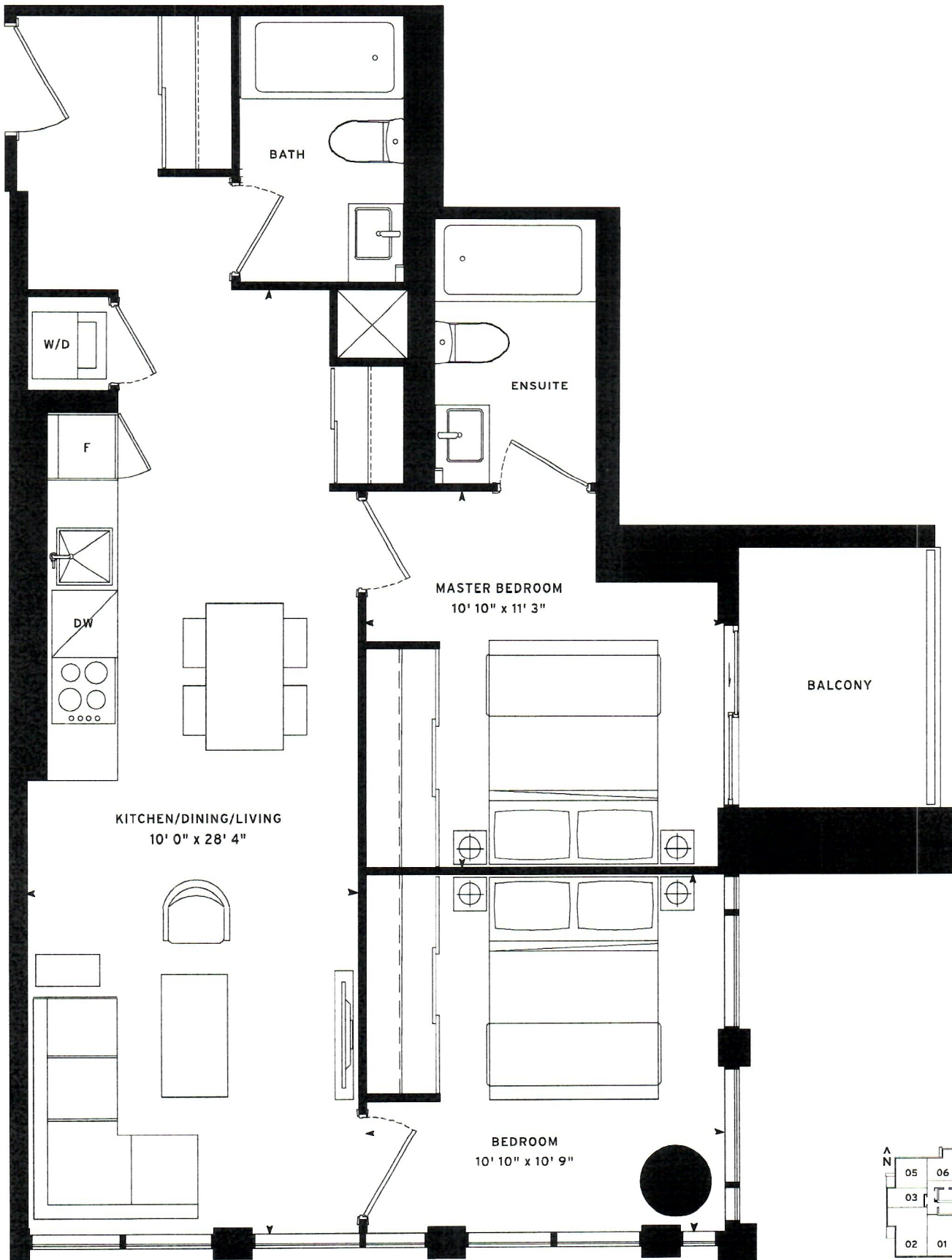
Note: All prices, figures, sizes, specifications and information are subject to change without notice. E. & O.E. All areas and stated dimensions are approximate. Actual usable floor space, living area and square footage may vary from stated floor area. All illustrations are artist's concept only. The unit shown may be the reverse of the unit purchased. Exterior building elements may be visible from within unit, including but not limited to frit patterning, mullion/metal panel placements, or other visual treatments. The purchase price does not include any furniture. © 2020 CentreCourt Developments. All rights reserved.

# MERCER 11

## 2 BED: 741 SF

# 552<sup>o</sup>

MERCER



Note: All prices, figures, sizes, specifications and information are subject to change without notice. E. & O.E. All areas and stated dimensions are approximate. Actual usable floor space, living area and square footage may vary from stated floor area. All illustrations are artist's concept only. The unit shown may be the reverse of the unit purchased. Exterior building elements may be visible from within unit, including but not limited to frit patterning, mullion/metal panel placements, or other visual treatments. The purchase price does not include any furniture. © 2020 CentreCourt Developments. All rights reserved.