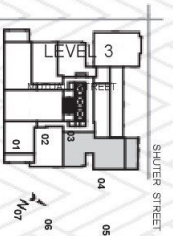
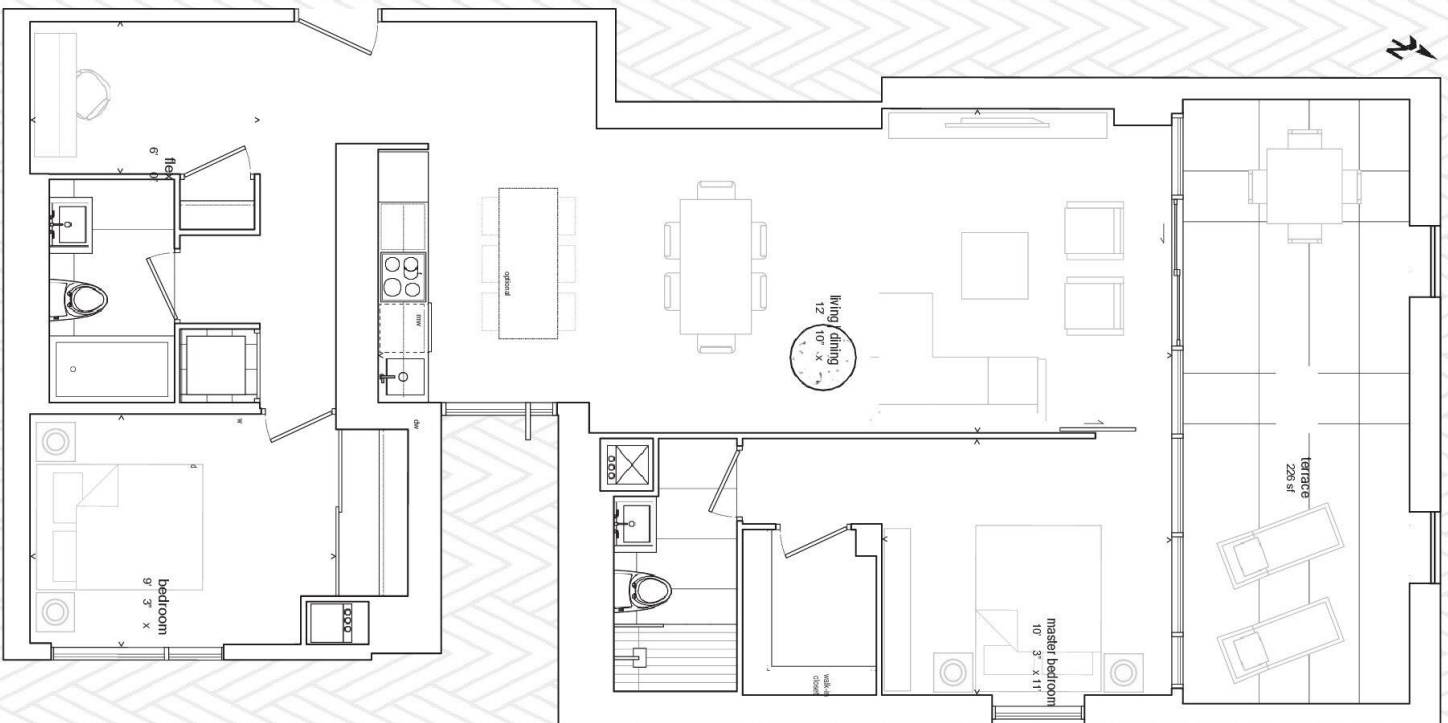


305 / TWO BEDROOM AND FLEX

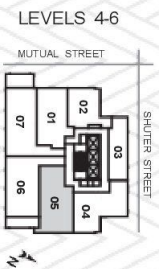
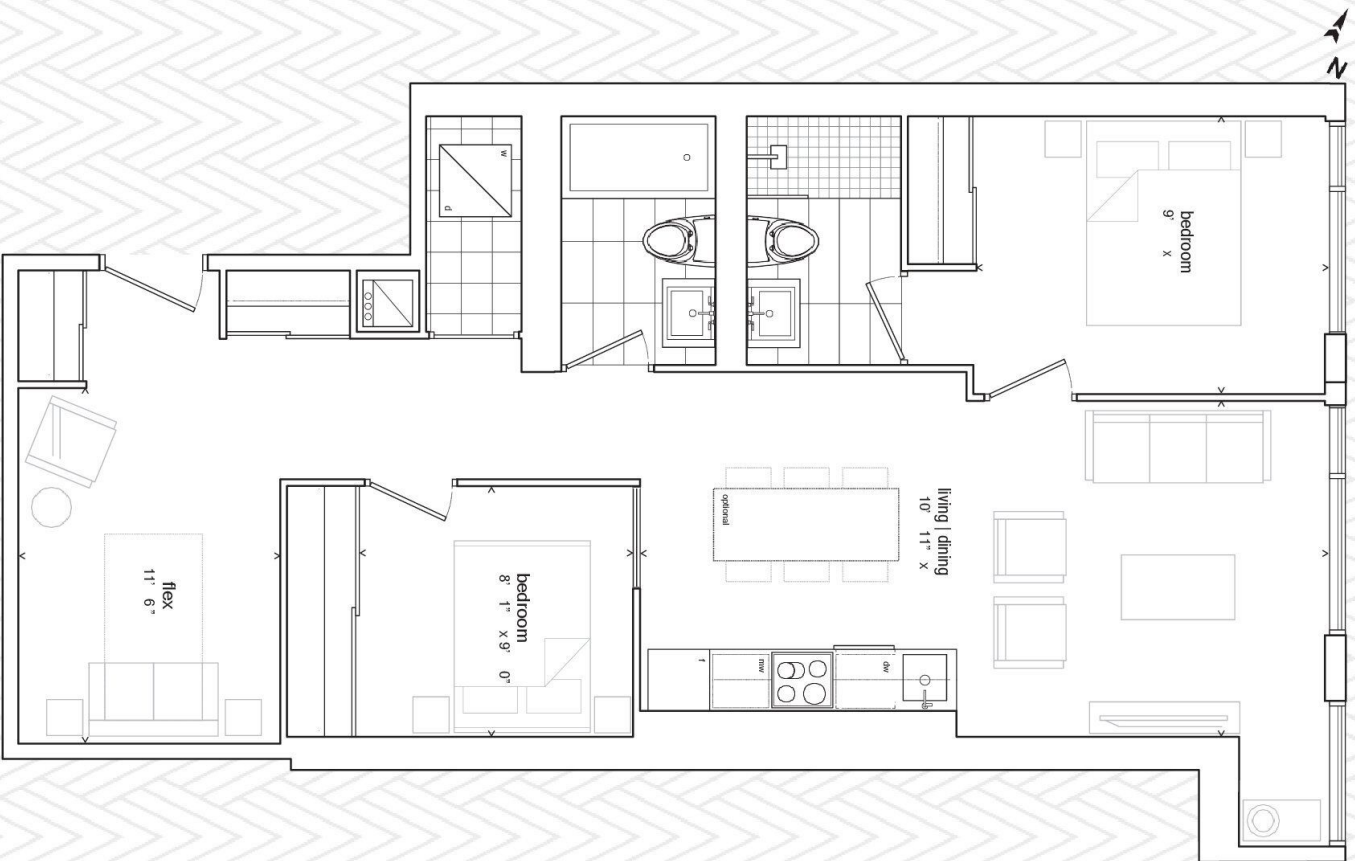
1,375 SF TOTAL / 1,149 SF INTERIOR PLUS 226 SF EXTERIOR



THE GARDEN DISTRICT
CONDOMINIUM

405 / 505 / 605 / TWO BEDROOM AND FLEX

871 SF INTERIOR

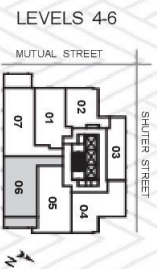


All sizes, dimensions and specifications are subject to change without notice. This plan is not to scale and is subject to architectural review and revision. In order to comply with building site conditions and municipal, structural, vendor and/or architectural requirements, actual living areas may vary from floor area stated. Floor area has been measured and may vary in accordance with bulletin #22 published by the Tarion Warranty Corporation. All furniture shown on marketing plans are not included. Purchasers acknowledge that the dwelling units with terraces or balconies may contain an interior step up for access to such terraces or balconies. The balcony area finishing material and any dividers, where applicable, may vary from suite to suite based on design and material specifications. balcony dimensions, configuration and location are estimates only and may not be exactly as shown. Location of columns, size and type may vary without notice. E.&O.E.

THE GARDEN DISTRICT
CONDOMINIUM

406 / 506 / 606 / TWO BEDROOM AND FLEX

1,035 SF TOTAL / 938 SF INTERIOR PLUS 97 SF EXTERIOR



LEVELS 4-6

MUTUAL STREET

SHUTER STREET

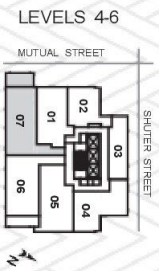
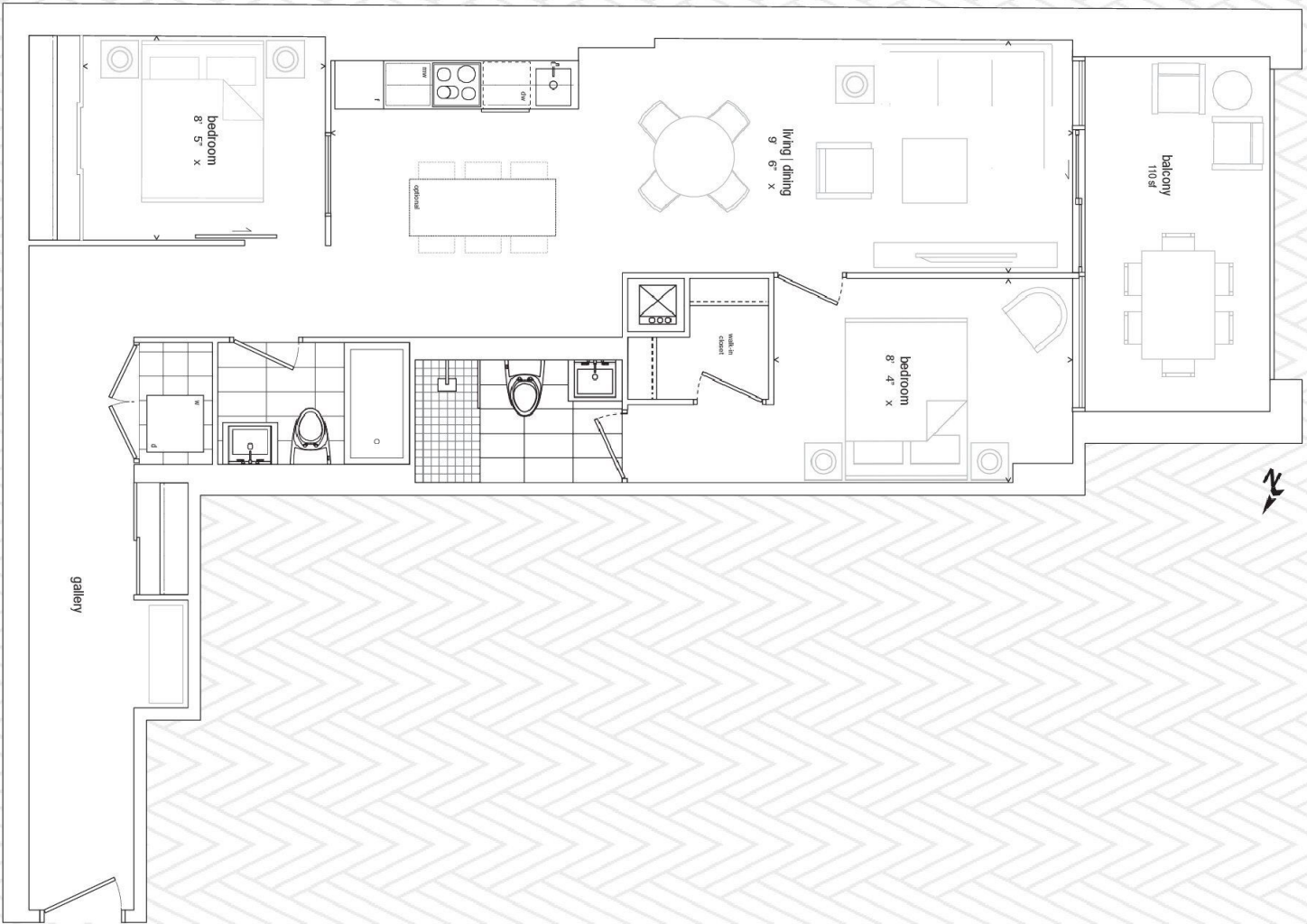
N

All sizes, dimensions and specifications are subject to change without notice. This plan is not to scale and is subject to architectural review and revision. In order to comply with building site conditions and municipal, structural, vendor and/or architectural requirements, actual living areas may vary from floor area stated. Floor area has been measured and may vary in accordance with bulletin #22 published by the Tarion Warranty Corporation. All furniture shown on marketing plans are not included. Purchasers acknowledge that the dwelling units with terraces or balconies may contain an interior step up for access to such terraces or balconies. The balcony area finishing material and any dividers, where applicable, may vary from suite to suite based on design and material specifications. balcony dimensions, configuration and location are estimates only and may not be exactly as shown. Location of columns, size and type may vary without notice. E.&O.E.

MCARDEN
DISTRICT
CONDOMINIUM

407 / 507 / 607 / TWO BEDROOM

1,089 SF TOTAL / 979 SF INTERIOR PLUS 110 SF EXTERIOR



LEVELS 4-6

MUTUAL STREET

SHUTER STREET

N

All sizes, dimensions and specifications are subject to change without notice. This plan is not to scale and is subject to architectural review and revision. In order to comply with building site conditions and municipal, structural, vendor and/or architectural requirements, actual living areas may vary from floor area stated. Floor area has been measured and may vary in accordance with bulletin #22 published by the Taron Warranty Corporation. All furniture shown on marketing plans are not included. Purchasers acknowledge that the dwelling units with terraces or balconies may contain an interior step up for access to such terraces or balconies. The balcony area finishing material and any dividers, where applicable, may vary from suite to suite based on design and material specifications. balcony dimensions, configuration and location are estimates only and may not be exactly as shown. Location of columns, size and type may vary without notice. E.&O.E.

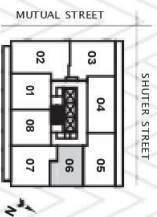
THE GARDEN DISTRICT
CONDOMINIUM

06A / ONE BEDROOM

504 SF INTERIOR



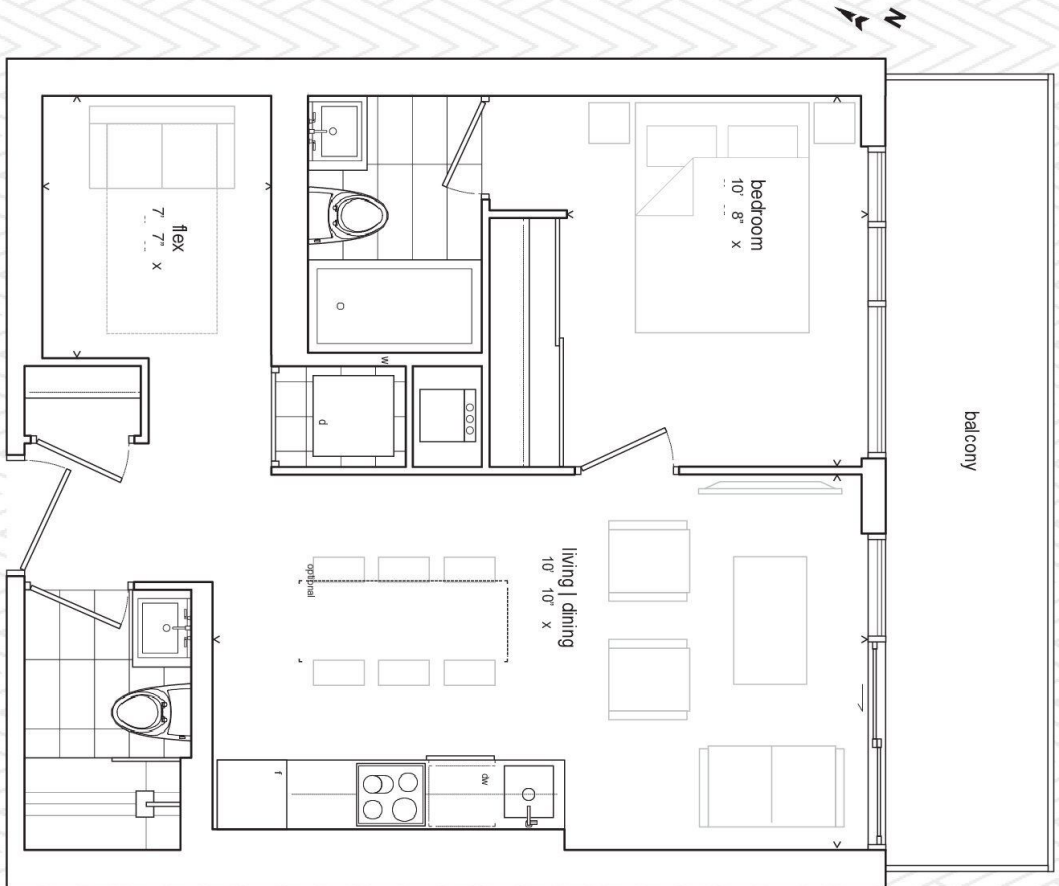
LEVELS 19-32



All sizes, dimensions and specifications are subject to change without notice. This plan is not to scale and is subject to architectural review and revision. In order to comply with building site conditions and municipal, structural, vendor and/or architectural requirements, actual living areas may vary from floor area stated. Floor area has been measured and may vary in accordance with bulletin #22 published by the Tarion Warranty Corporation. All furniture shown on marketing plans are not included. Purchasers acknowledge that the dwelling units with terraces or balconies may contain an interior step up for access to such terraces or balconies. The balcony area finishing material and any dividers, where applicable, may vary from suite to suite based on design and material specifications. balcony dimensions, configuration and location are estimates only and may not be exactly as shown. Location of columns, size and type may vary without notice. E & O E.

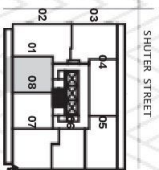
01 / ONE BEDROOM AND FLEX

692 SF TOTAL / 584 SF INTERIOR PLUS 108 SF EXTERIOR



LEVELS 8-32

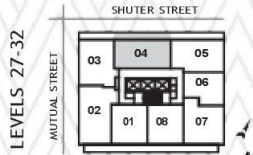
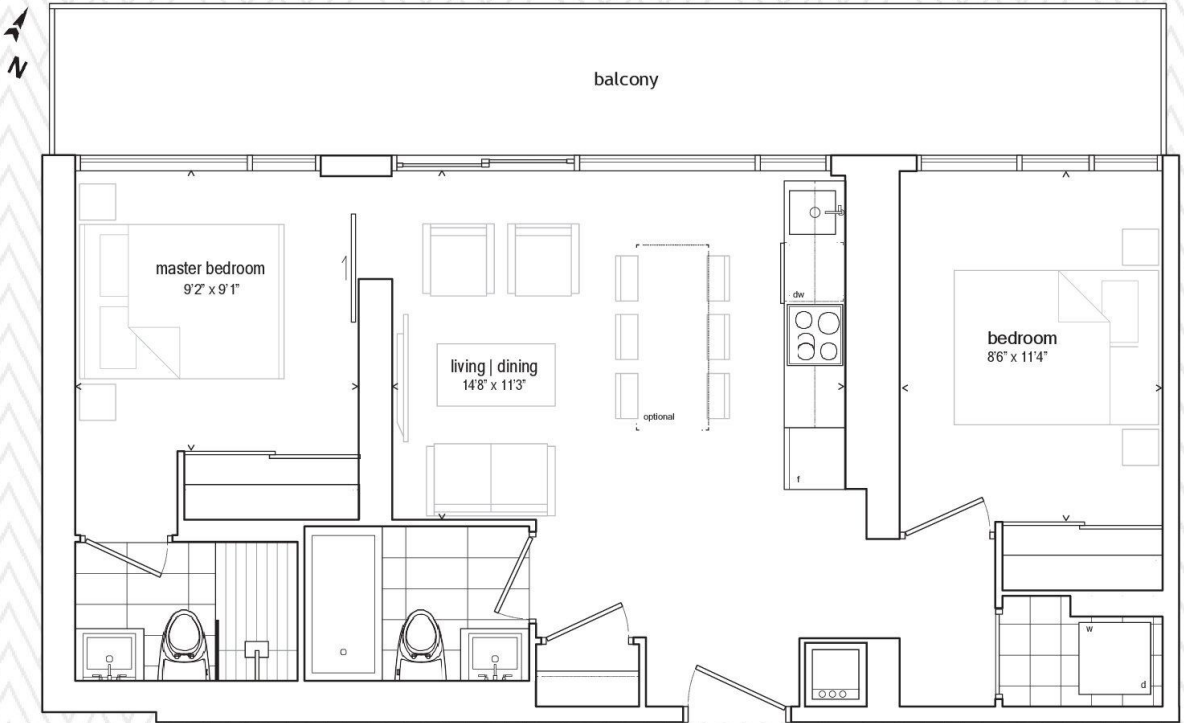
MUTUAL STREET



All sizes, dimensions and specifications are subject to change without notice. This plan is not to scale and is subject to architectural review and revision. In order to comply with building site conditions and municipal, structural, vendor and/or architectural requirements, actual living areas may vary from floor area stated. Floor area has been measured and may vary in accordance with bulletin #22 published by the Tarion Warranty Corporation. All furniture shown on marketing plans are not included. Purchasers acknowledge that the dwelling units with terraces or balconies may contain an interior step up for access to such terraces or balconies. The balcony area finishing material and any dividers, where applicable, may vary from suite to suite based on design and material specifications. balcony dimensions, configuration and location are estimates only and may not be exactly as shown. Location of columns, size and type may vary without notice. E&O.E.

04 / TWO BEDROOM

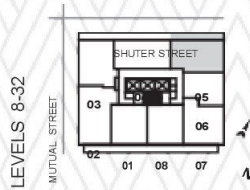
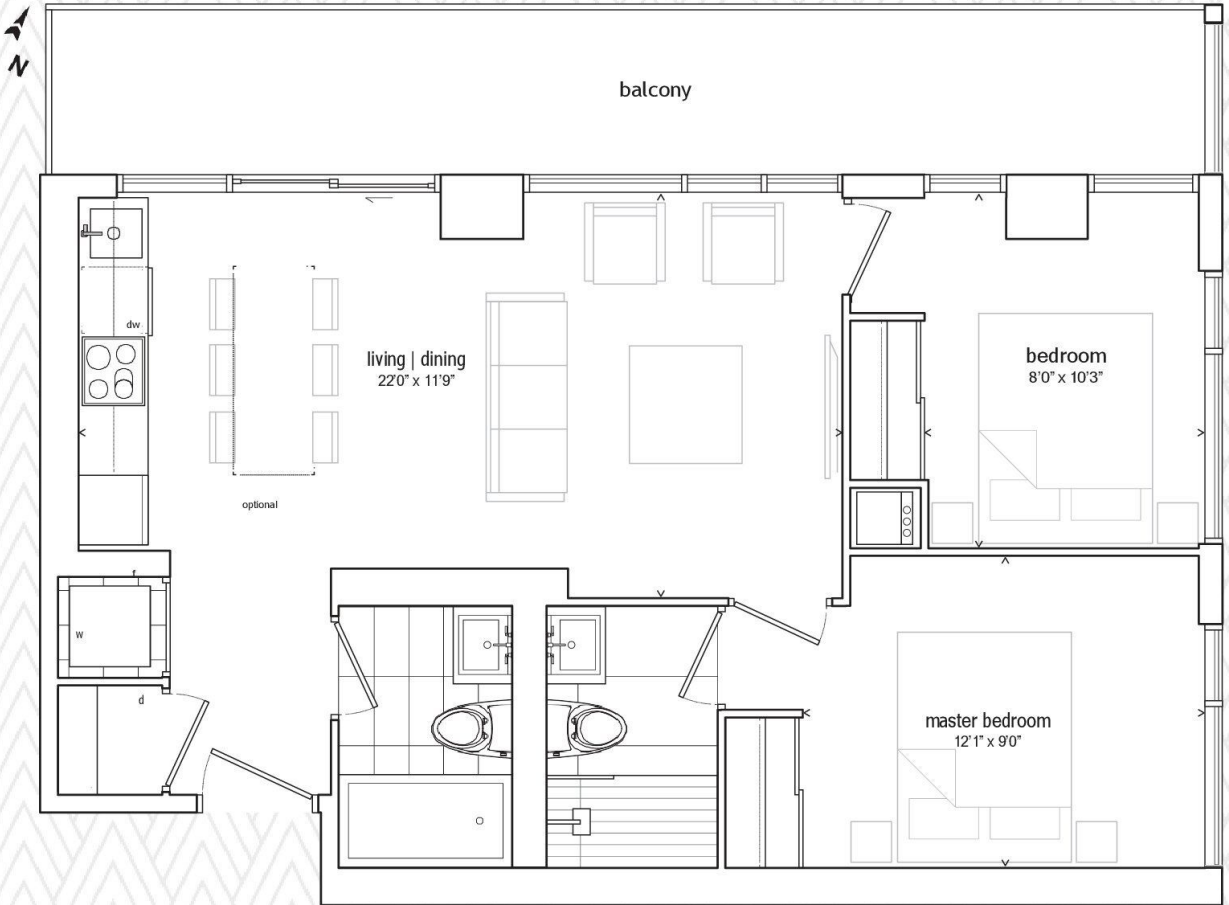
831 SF TOTAL / 660 SF INTERIOR PLUS 171 SF EXTERIOR



All sizes, dimensions and specifications are subject to change without notice. This plan is not to scale and is subject to architectural review and revision. In order to comply with building site conditions and municipal, structural, vendor and/or architectural requirements, actual living areas may vary from floor area stated. Floor area has been measured and may vary in accordance with bulletin #22 published by the Tarion Warranty Corporation. All furniture shown on marketing plans are not included. Purchasers acknowledge that the dwelling units with terraces or balconies may contain an interior step up for access to such terraces or balconies. The balcony area finishing material and any dividers, where applicable, may vary from suite to suite based on design and material specifications. balcony dimensions, configuration and location are estimates only and may not be exactly as shown. Location of columns, size and type may vary without notice. E.&O.E.

05 / TWO BEDROOM

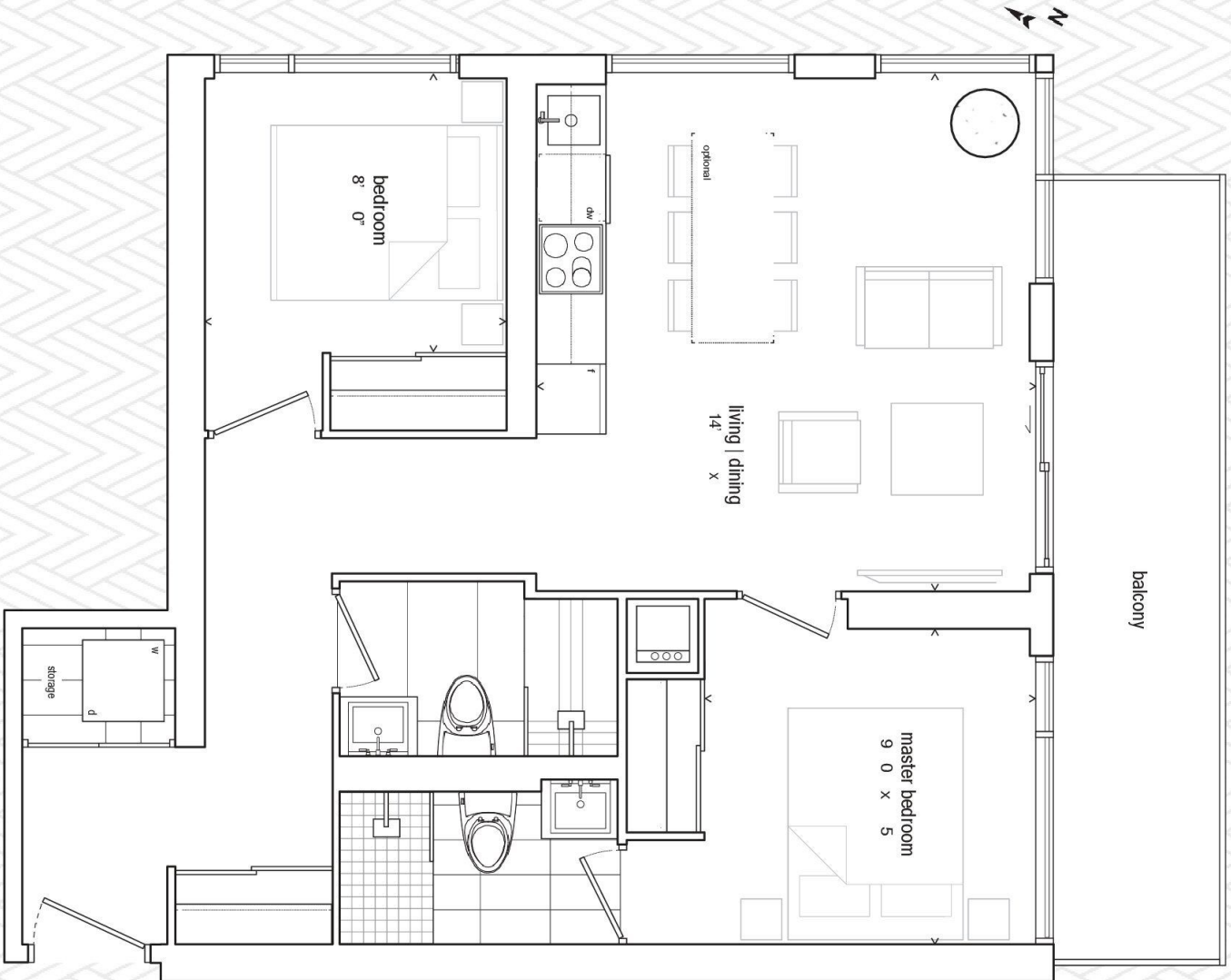
834 SF TOTAL / 676 SF INTERIOR PLUS 158 SF EXTERIOR



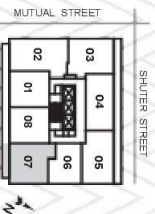
All sizes, dimensions and specifications are subject to change without notice. This plan is not to scale and is subject to architectural review and revision. In order to comply with building site conditions and municipal, structural, vendor and/or architectural requirements, actual living areas may vary from floor area stated. Floor area has been measured and may vary in accordance with bulletin #22 published by the Tarion Warranty Corporation. All furniture shown on marketing plans are not included. Purchasers acknowledge that the dwelling units with terraces or balconies may contain an interior step up for access to such terraces or balconies. The balcony area finishing material and any dividers, where applicable, may vary from suite to suite based on design and material specifications. balcony dimensions, configuration and location are estimates only and may not be exactly as shown. Location of columns, size and type may vary without notice. E.&O.E.

07 / TWO BEDROOM

800 SF TOTAL / 693 SF INTERIOR PLUS 107 SF EXTERIOR



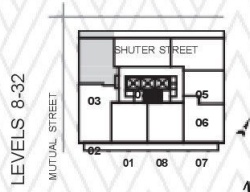
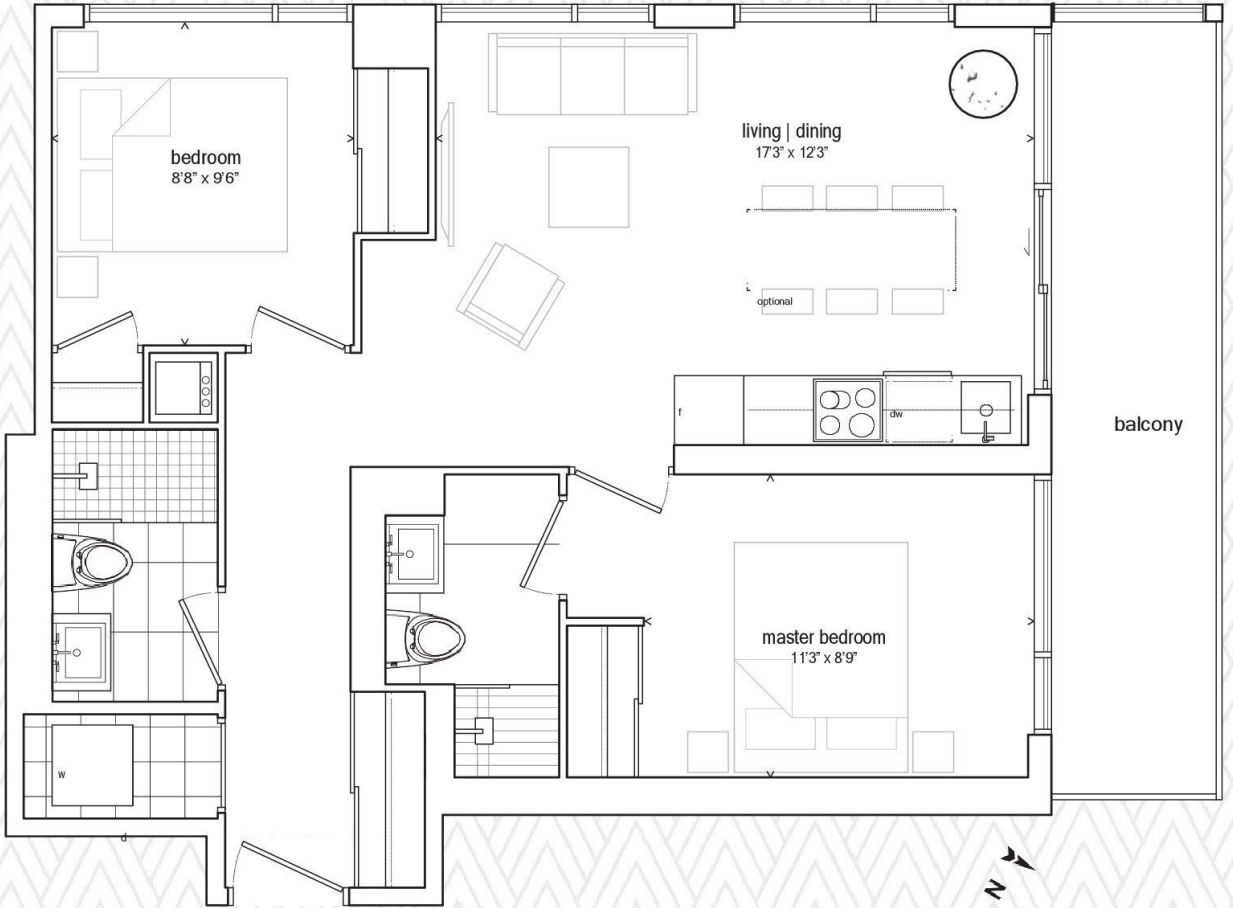
LEVELS 8-32



All sizes, dimensions and specifications are subject to change without notice. This plan is not to scale and is subject to architectural review and revision. In order to comply with building site conditions and municipal, structural, vendor and/or architectural requirements, actual living areas may vary from floor area stated. Floor area has been measured and may vary in accordance with bulletin #22 published by the Taron Warranty Corporation. All furniture shown on marketing plans are not included. Purchasers acknowledge that the dwelling units with terraces or balconies may contain an interior step up for access to such terraces or balconies. The balcony area finishing material and any dividers, where applicable, may vary from suite to suite based on design and material specifications. Balcony dimensions, configuration and location are estimates only and may not be exactly as shown. Location of columns, size and type may vary without notice. E.&O.E.

03 / TWO BEDROOM

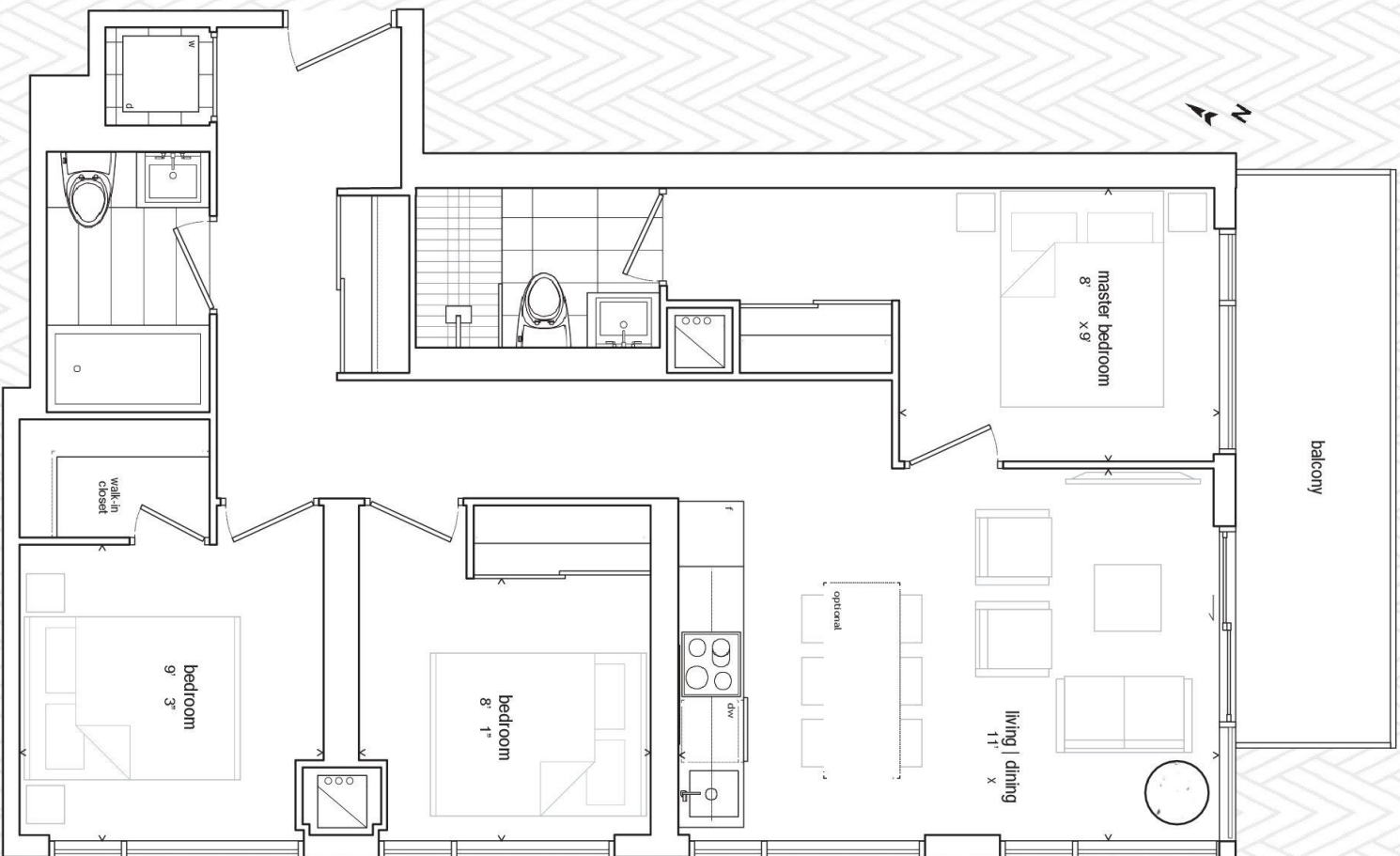
802 SF TOTAL / 696 SF INTERIOR PLUS 106 SF EXTERIOR



All sizes, dimensions and specifications are subject to change without notice. This plan is not to scale and is subject to architectural review and revision. In order to comply with building site conditions and municipal, structural, vendor and/or architectural requirements, actual living areas may vary from floor area stated. Floor area has been measured and may vary in accordance with bulletin #22 published by the Tarion Warranty Corporation. All furniture shown on marketing plans are not included. Purchasers acknowledge that the dwelling units with terraces or balconies may contain an interior step up for access to such terraces or balconies. The balcony area finishing material and any dividers, where applicable, may vary from suite to suite based on design and material specifications. Balcony dimensions, configuration and location are estimates only and may not be exactly as shown. Location of columns, size and type may vary without notice. E.&O.E.

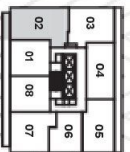
02 / THREE BEDROOM

921 SF TOTAL / 838 SF INTERIOR PLUS 83 SF EXTERIOR



LEVELS 12-32

MUTUAL STREET



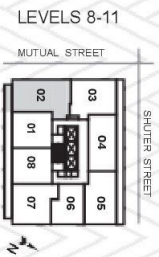
SHUTER STREET



All sizes, dimensions and specifications are subject to change without notice. This plan is not to scale and is subject to architectural review and revision. In order to comply with building site conditions and municipal, structural, vendor and/or architectural requirements, actual living areas may vary from floor area stated. Floor area has been measured and may vary in accordance with bulletin #22 published by the Tarion Warranty Corporation. All furniture shown on marketing plans are not included. Purchasers acknowledge that the dwelling units with terraces or balconies may contain an interior step up for access to such terraces or balconies. The balcony area finishing material and any dividers, where applicable, may vary from suite to suite based on design and material specifications, balcony dimensions, configuration and location are estimates only and may not be exactly as shown. Location of columns, size and type may vary without notice. E.&O.E.

02A / THREE BEDROOM

921 SF TOTAL / 838 SF INTERIOR PLUS 83 SF EXTERIOR



LEVELS 8-11

MUTUAL STREET

SHUTER STREET



All sizes, dimensions and specifications are subject to change without notice. This plan is not to scale and is subject to architectural review and revision. In order to comply with building site conditions and municipal, structural, vendor and/or architectural requirements, actual living areas may vary from floor area stated. Floor area has been measured and may vary in accordance with bulletin #22 published by the Tarion Warranty Corporation. All furniture shown on marketing plans are not included. Purchasers acknowledge that the dwelling units with terraces or balconies may contain an interior step up for access to such terraces or balconies. The balcony area finishing material and any dividers, where applicable, may vary from suite to suite based on design and material specifications. balcony dimensions, configuration and location are estimates only and may not be exactly as shown. Location of columns, size and type may vary without notice. E.&O.E.